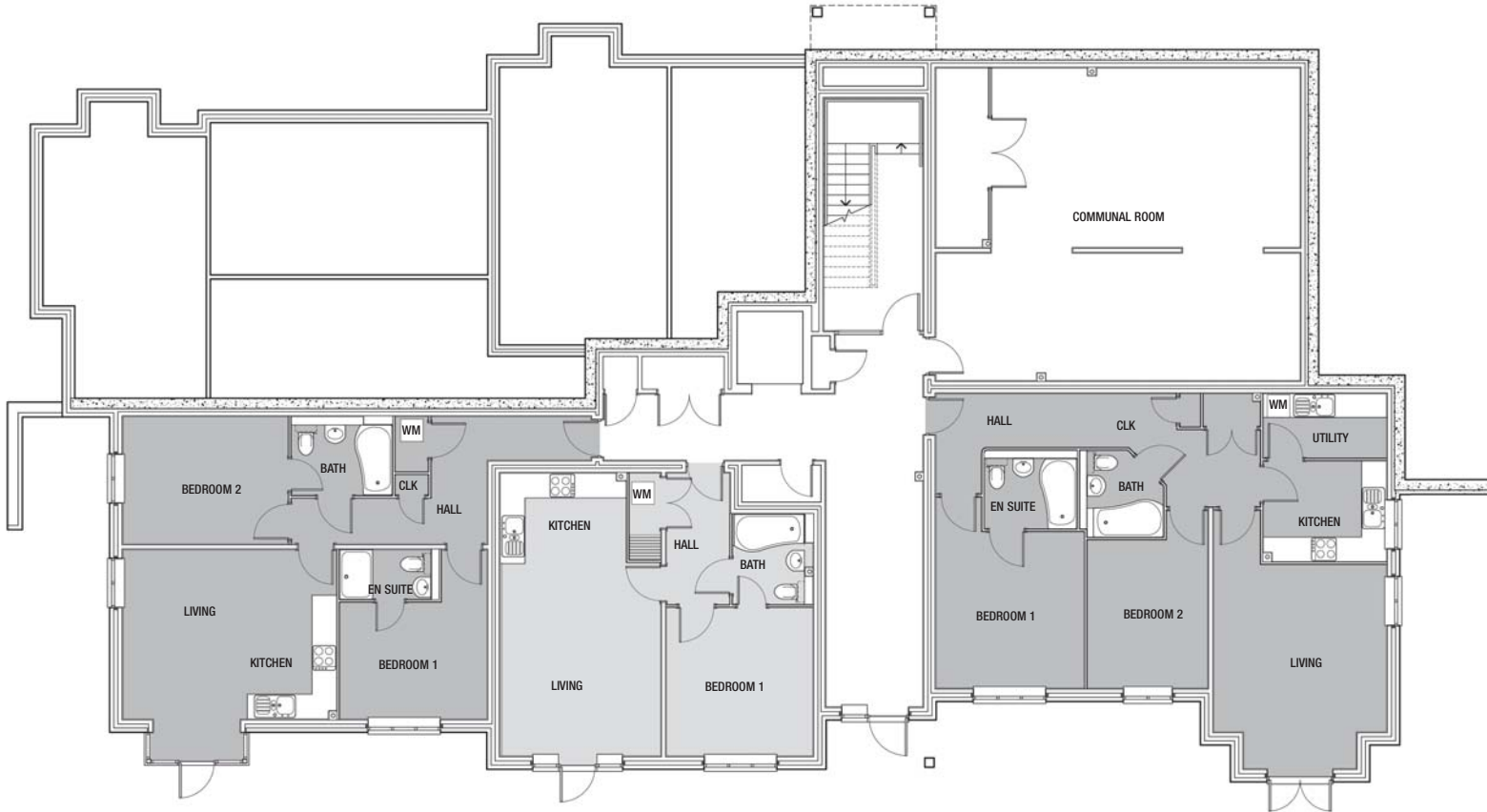


ZONEKT20

APARTMENT
LAYOUTS



APARTMENT 3
739 SQ.FT 68.9 SQ.M

APARTMENT 2
542 SQ.FT 50.5 SQ.M

APARTMENT 1
917 SQ.FT 85.6 SQ.M

APARTMENT 1

Living/dining	5.0 x 4.1
Kitchen	2.0 x 2.97
Utility	2.0 x 2.97
Bedroom 1	3.8 x 3.6
En suite	2.25 x 1.9
Bedroom 2	3.6 x 2.92
Bathroom	2.03 x 2.1

APARTMENT 2

Living/dining	4.7 x 3.86
Kitchen	2.2 x 3.0
Bedroom 1	3.6 x 3.55
En suite/bath	2.2 x 1.95

APARTMENT 3

Living/dining/kitchen	4.11 x 5.2
Bedroom 1	2.93 x 3.57
En suite	1.2 x 2.4
Bedroom 2	3.1 x 4.0
En suite/bath	2.46 x 1.9

ZONE A GROUND FLOOR

APARTMENT 8

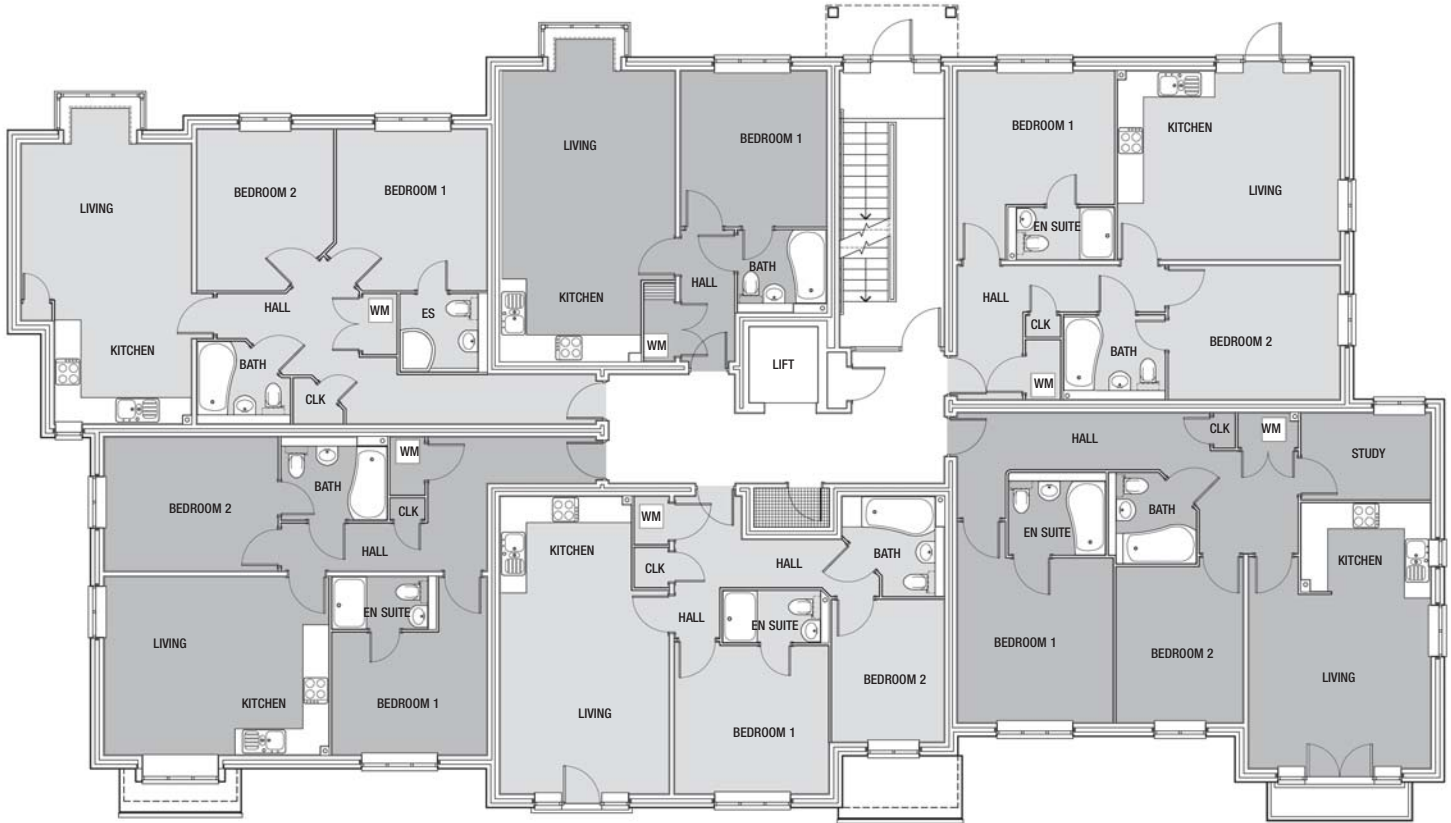
725.8 SQ.FT 67.6 SQ.M

APARTMENT 9

529.6 SQ.FT 49.41 SQ.M

APARTMENT 4

725.8 SQ.FT 67.6 SQ.M



APARTMENT 7

739 SQ.FT 68.9 SQ.M

APARTMENT 6

696 SQ.FT 65 SQ.M

APARTMENT 5

917 SQ.FT 85.6 SQ.M

APARTMENT 4

Living/dining/kitchen	4.36 x 5.14
Bedroom 1	3.18 x 3.63
En suite	1.2 x 2.45
Bedroom 2	3.1 x 3.96
En suite/bath	1.95 x 2.35

APARTMENT 5

Living/dining	5.0 x 4.1
Kitchen	2.0 x 2.97
Study	2.0 x 2.97
Bedroom 1	3.8 x 3.6
En suite	2.25 x 1.9
Bedroom 2	3.6 x 2.92
Bathroom	2.03 x 2.1

APARTMENT 6

Living/dining	4.7 x 3.87
Kitchen	2.18 x 3.01
Bedroom 1	3.51 x 3.55
En suite	1.2 x 2.4
Bedroom 2	3.3 x 2.6
Bathroom	2.4 x 2.3

APARTMENT 7

Living/dining/kitchen	4.11 x 5.2
Bedroom 1	2.93 x 3.57
En suite	1.2 x 2.4
Bedroom 2	3.1 x 4.0
En suite/bath	2.46 x 1.9

APARTMENT 8

Living/dining	4.0 x 4.07
Kitchen	3.22 x 2.4
Bedroom 1	3.66 x 3.47
En suite	1.8 x 2.0
Bedroom 2	3.66 x 3.15
Bathroom	2.15 x 1.8

APARTMENT 9

Living/dining	4.83 x 4.0
Kitchen	1.87 x 3.16
Bedroom 1	3.6 x 3.36
En suite/bath	1.9 x 2.05

APARTMENT 14

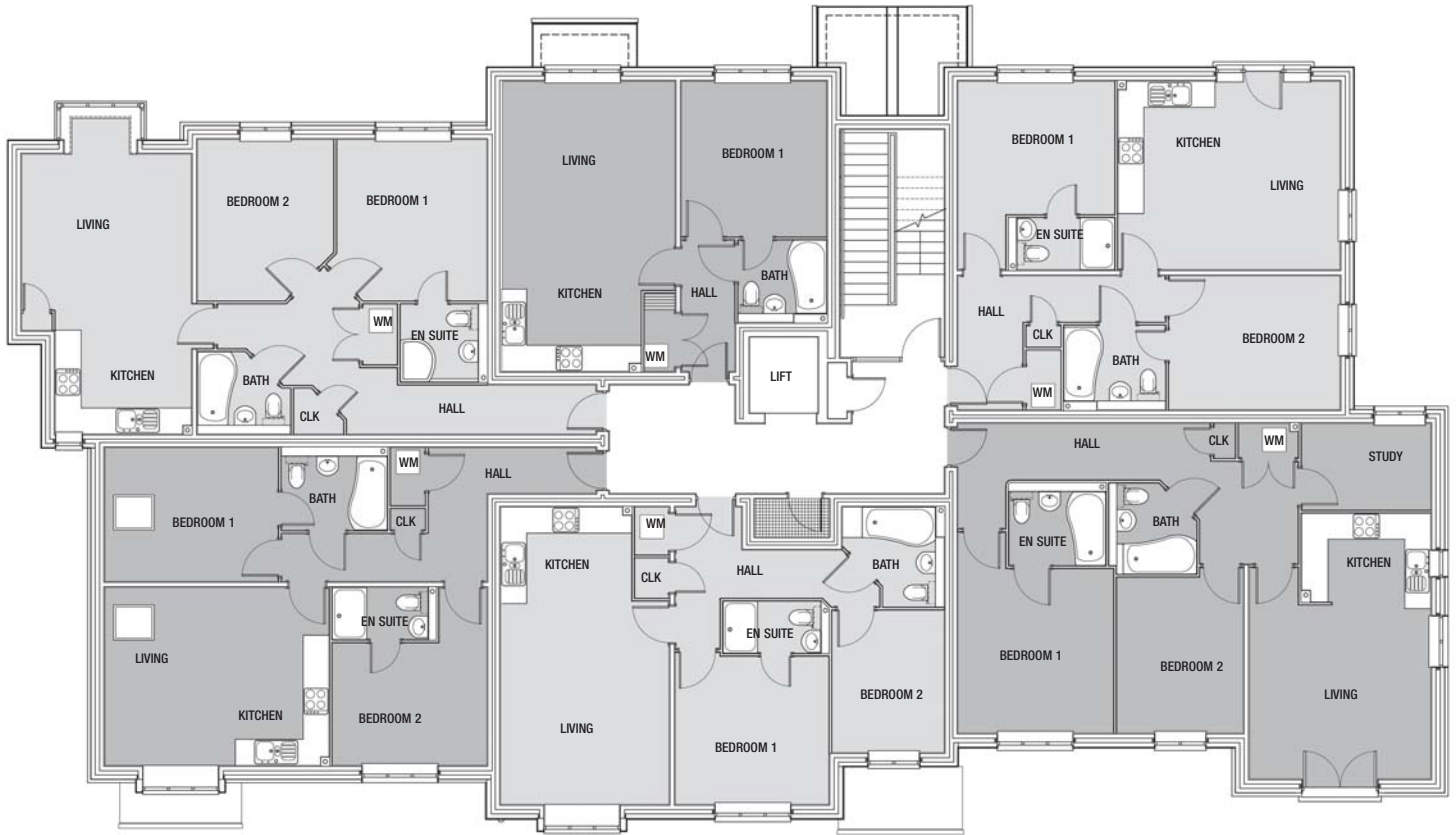
725.8 SQ.FT 67.6 SQ.M

APARTMENT 15

529.6 SQ.FT 49.41 SQ.M

APARTMENT 10

725.8 SQ.FT 67.6 SQ.M



APARTMENT 13

739 SQ.FT 68.9Q.M

APARTMENT 12

696 SQ.FT 65 SQ.M

APARTMENT 11

917 SQ.FT 85.6 SQ.M

APARTMENT 10

Living/dining/kitchen	4.36 x 5.14
Bedroom 1	3.18 x 3.63
En suite	1.2 x 2.45
Bedroom 2	3.1 x 3.96
En suite/bath	1.95 x 2.35

APARTMENT 11

Living/dining	5.0 x 4.1
Kitchen	2.0 x 2.97
Study	2.0 x 2.97
Bedroom 1	3.8 x 3.6
En suite	2.25 x 1.9
Bedroom 2	3.6 x 2.92
Bathroom	2.03 x 2.1

APARTMENT 12

Living/dining	4.7 x 3.87
Kitchen	2.18 x 3.01
Bedroom 1	3.51 x 3.55
En suite	1.2 x 2.4
Bedroom 2	3.3 x 2.6
Bathroom	2.4 x 2.3

APARTMENT 13

Living/dining/kitchen	4.11 x 5.2
Bedroom 1	2.93 x 3.57
En suite	1.2 x 2.4
Bedroom 2	3.1 x 4.0
En suite/bath	2.46 x 1.9

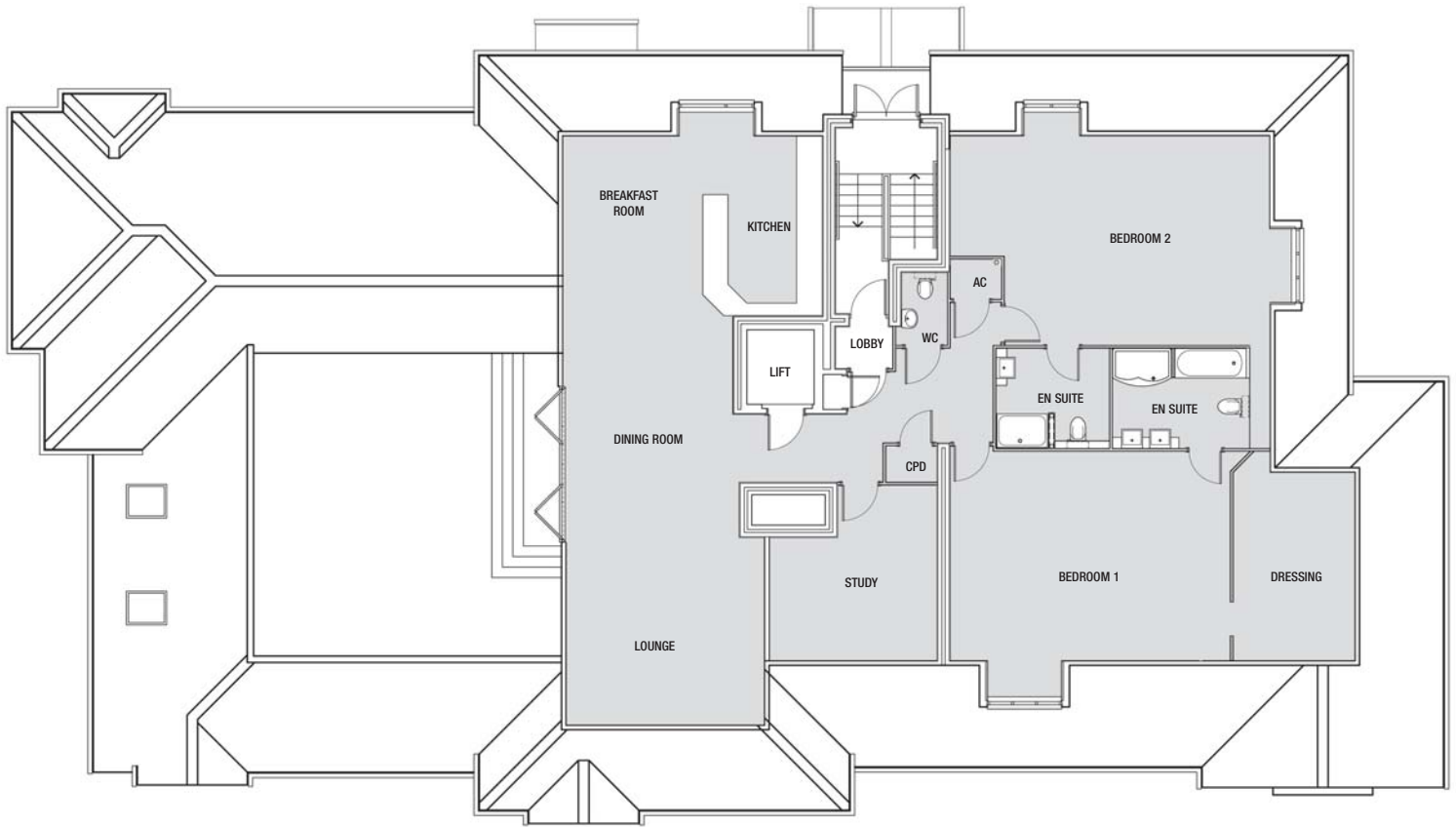
APARTMENT 14

Living/dining	4.0 x 4.07
Kitchen	3.22 x 2.4
Bedroom 1	3.66 x 3.47
En suite	1.8 x 2.0
Bedroom 2	3.66 x 3.15
Bathroom	2.15 x 1.8

APARTMENT 15

Living/dining	4.83 x 4.0
Kitchen	1.87 x 3.16
Bedroom 1	3.6 x 3.36
En suite/bath	1.9 x 2.05

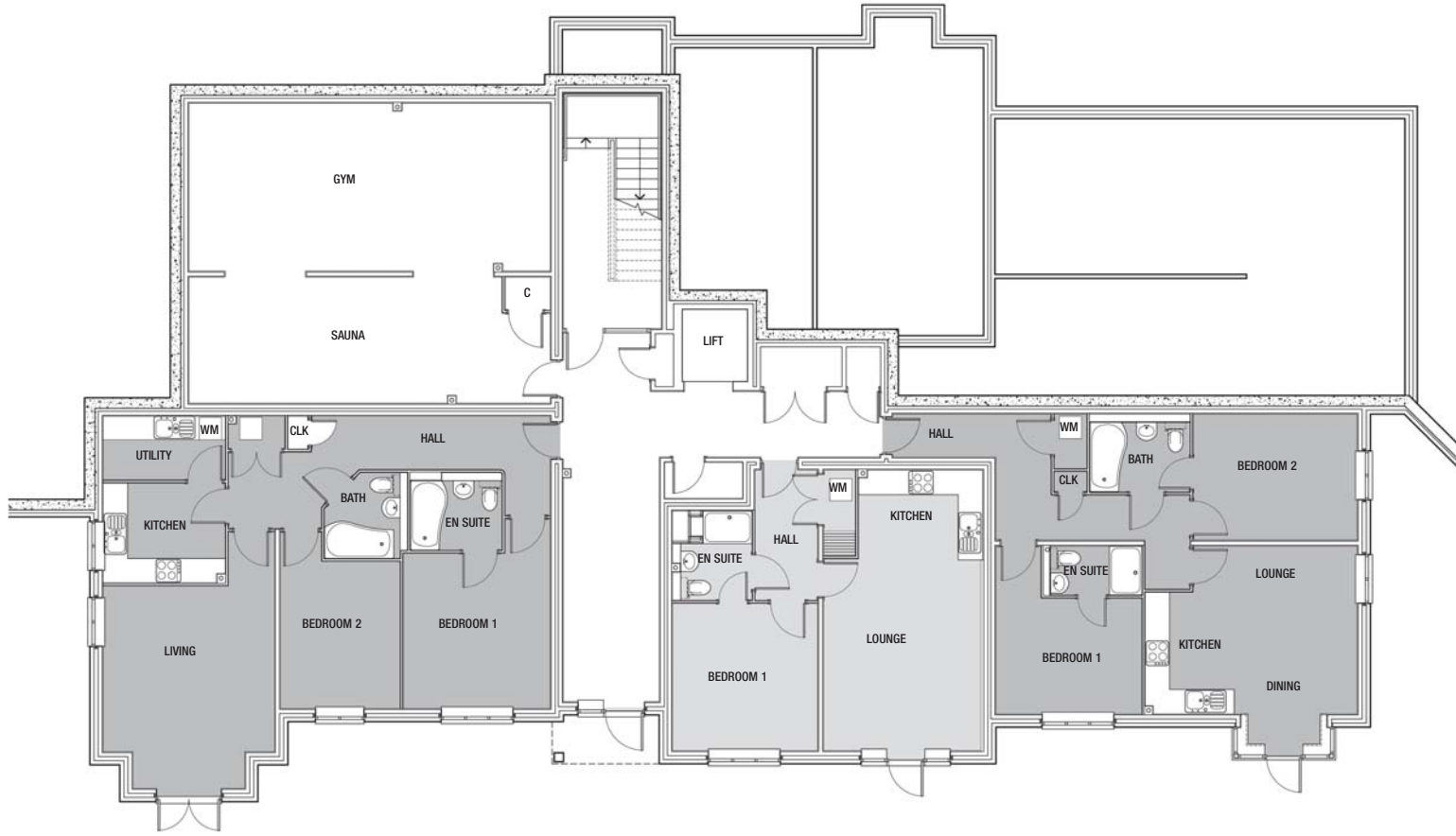
ZONE A SECOND FLOOR



PENTHOUSE 16
1918 SQ.FT 179.0 SQ.M

PENTHOUSE 16

Kitchen	4.3 x 3.3	Dressing room	4.84 x 2.08
Utility	3.44 x 2.13	Bedroom 2	4.55 x 7.1
Living/dining	8.55 x 5.8	En suite	2.37 x 2.18
Bedroom 1	4.83 x 5.0	Study/bed 3	4.03 x 2.56
En suite	2.37 x 3.57	Roof Garden	7.5 x 7.0



APARTMENT 3
917 SQ.FT 85.6 SQ.M

APARTMENT 2
542 SQ.FT 50.5 SQ.M

APARTMENT 1
739 SQ.FT 68.9 SQ.M

APARTMENT 1

Living/dining/kitchen	4.11 x 5.2
Bedroom 1	2.93 x 3.57
En suite	1.2 x 2.4
Bedroom 2	3.1 x 4.0
En suite/bath	2.46 x 1.9

APARTMENT 2

Living/dining	4.7 x 3.86
Kitchen	2.2 x 3.0
Bedroom 1	3.6 x 3.55
En suite/bath	2.2 x 1.95

APARTMENT 3

Living/dining	5.0 x 4.1
Kitchen	2.0 x 2.97
Utility	2.0 x 2.97
Bedroom 1	3.8 x 3.6
En suite	2.25 x 1.9
Bedroom 2	3.6 x 2.92
Bathroom	2.03 x 2.1

ZONE B GROUND FLOOR

APARTMENT 9
725.8 SQ.FT 67.6 SQ.M

APARTMENT 4
529.6 SQ.FT 49.41 SQ.M

APARTMENT 5
796 SQ.FT 74.2 SQ.M



APARTMENT 8
917 SQ.FT 85.6 SQ.M

APARTMENT 7
696 SQ.FT 65 SQ.M

APARTMENT 6
739 SQ.FT 68.9 SQ.M

APARTMENT 4

Living/dining	4.83 x 4.0
Kitchen	1.87 x 3.16
Bedroom 1	3.6 x 3.36
En suite/bath	1.9 x 2.05

APARTMENT 5

Living/dining	4.0 x 4.07
Kitchen	3.22 x 2.4
Bedroom 1	3.66 x 3.47
En suite	1.8 x 2.0
Bedroom 2	3.66 x 3.15
Bathroom	2.15 x 1.8

APARTMENT 6

Living/dining/kitchen	4.11 x 5.2
Bedroom 1	2.93 x 3.57
En suite	1.2 x 2.4
Bedroom 2	3.1 x 4.0
En suite/bath	2.46 x 1.9

APARTMENT 7

Living/dining	4.7 x 3.87
Kitchen	2.18 x 3.01
Bedroom 1	3.51 x 3.55
En suite	1.2 x 2.4
Bedroom 2	3.3 x 2.6
Bathroom	2.4 x 2.3

APARTMENT 8

Living/dining	5.0 x 4.1
Kitchen	2.0 x 2.97
Study	2.0 x 2.97
Bedroom 1	3.8 x 3.6
En suite	2.25 x 1.9
Bedroom 2	3.6 x 2.92
Bathroom	2.03 x 2.1

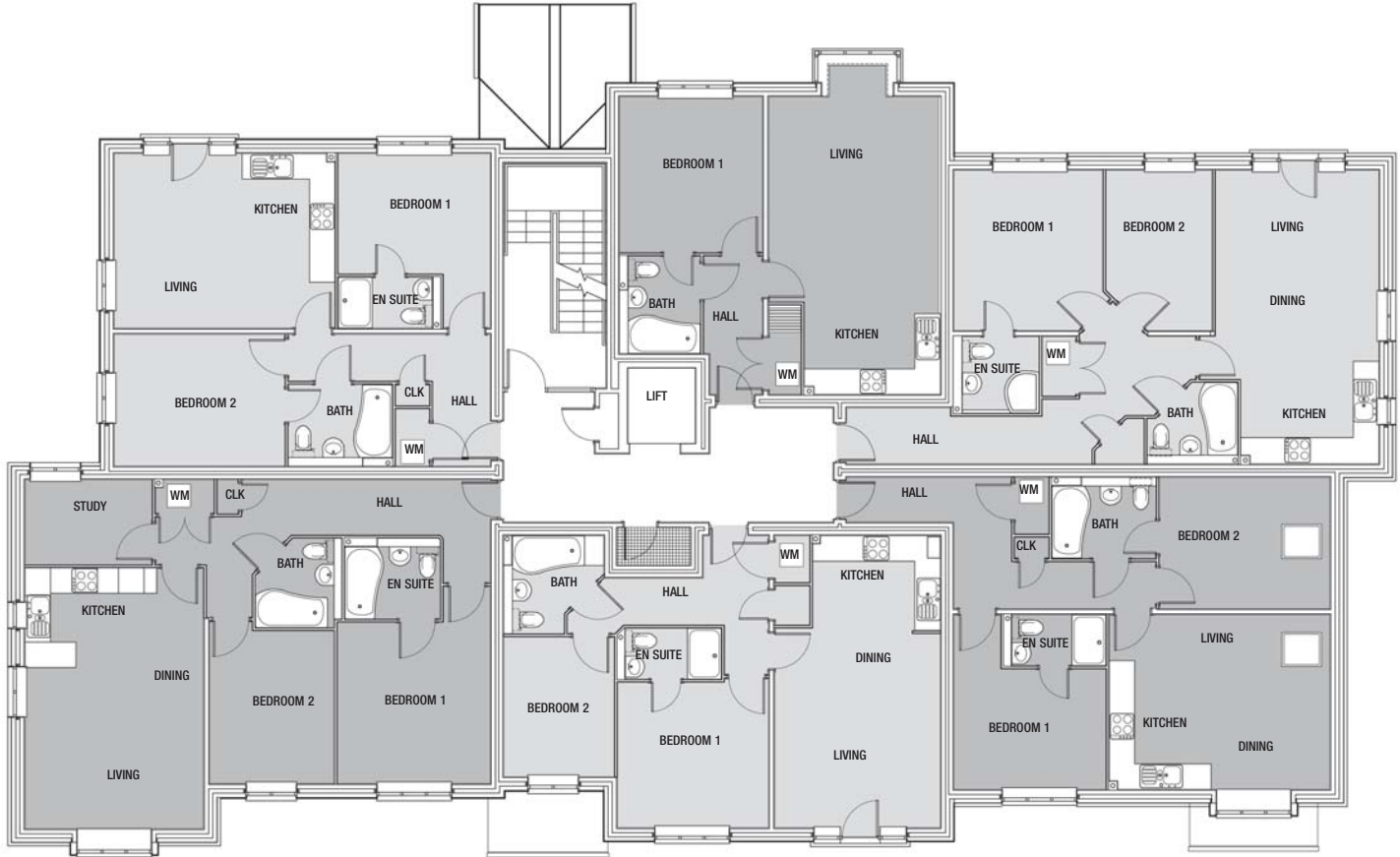
APARTMENT 9

Living/dining/kitchen	4.36 x 5.14
Bedroom 1	3.18 x 3.63
En suite	1.2 x 2.45
Bedroom 2	3.1 x 3.96
En suite/bath	1.95 x 2.35

APARTMENT 15
725.8 SQ.FT 67.6 SQ.M

APARTMENT 10
529.6 SQ.FT 49.41 SQ.M

APARTMENT 11
796 SQ.FT 74.2 SQ.M



APARTMENT 14
917 SQ.FT 85.6 SQ.M

APARTMENT 13
696 SQ.FT 65 SQ.M

APARTMENT 12
739 SQ.FT 68.9 SQ.M

APARTMENT 10

Living/dining	4.83 x 4.0
Kitchen	1.87 x 3.16
Bedroom 1	3.6 x 3.36
En suite/bath	1.9 x 2.05

APARTMENT 11

Living/dining	4.0 x 4.07
Kitchen	3.22 x 2.4
Bedroom 1	3.66 x 3.47
En suite	1.8 x 2.0
Bedroom 2	3.66 x 3.15
Bathroom	2.15 x 1.8

APARTMENT 12

Living/dining/kitchen	4.11 x 5.2
Bedroom 1	2.93 x 3.57
En suite	1.2 x 2.4
Bedroom 2	3.1 x 4.0
En suite/bath	2.46 x 1.9

APARTMENT 13

Living/dining	4.7 x 3.87
Kitchen	2.18 x 3.01
Bedroom 1	3.51 x 3.55
En suite	1.2 x 2.4
Bedroom 2	3.3 x 2.6
Bathroom	2.4 x 2.3

APARTMENT 14

Living/dining	5.0 x 4.1
Kitchen	2.0 x 2.97
Study	2.0 x 2.97
Bedroom 1	3.8 x 3.6
En suite	2.25 x 1.9
Bedroom 2	3.6 x 2.92
Bathroom	2.03 x 2.1

APARTMENT 15

Living/dining/kitchen	4.36 x 5.14
Bedroom 1	3.18 x 3.63
En suite	1.2 x 2.45
Bedroom 2	3.1 x 3.96
En suite/bath	1.95 x 2.35

ZONE SPECIFICATIONS

STANDARD FITTINGS

Under floor gas central heating
Walnut laminate doors
Recessed down-lighters (lounge, kitchen & bathrooms)
High quality chrome door furniture
Flooring supplied throughout

HALLWAY

High gloss ceramic flooring

LIVING ROOM

Floors finished in a mixture of Walnut laminated wood flooring/carpets

Flat 42inch wide screen (HD) television fitted as standard with media cabinet below
Full multi-media package including i-pod docking station and surround sound

KITCHEN

Tiled floors
State of the art, contemporary luxury fitted kitchens with integrated fridge/freezer, dishwasher, wine cooler and waste disposal system
Washer/dryer fitted in separate laundry cupboard away from the kitchen

MASTER BEDROOM & EN SUITES

Fitted wardrobes
Fitted carpets
Quality white sanitaryware
Chrome fittings, luxury showers
Contemporary tiling to floors and walls

BEDROOM 2

Carpet flooring
Fitted wardrobes

ELECTRICS

Generous supply of electric sockets
BT, FM & aerial points to all rooms
Full Cat 5 wiring

SECURITY

Full intruder alarm system
Video entry system
Locking window catches

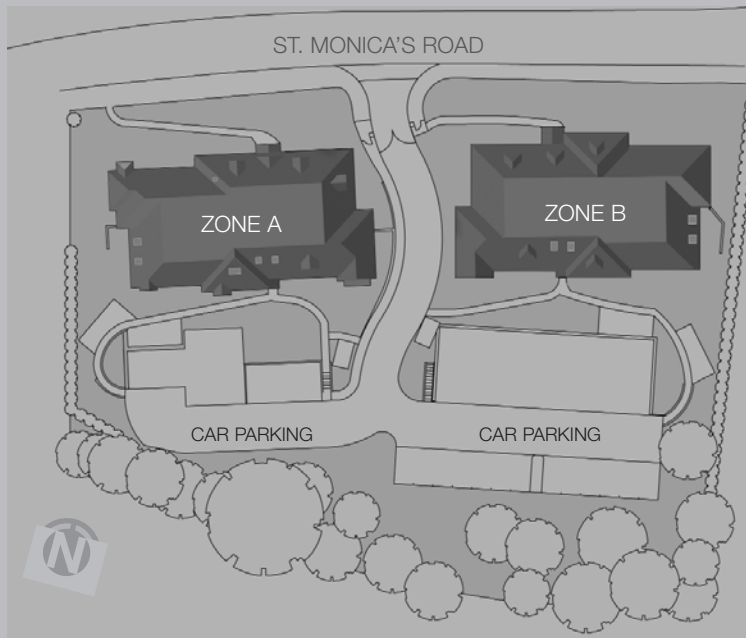
EXTERNAL

Communal landscaped gardens
Gated entrance
Designated car park spaces
Outside water taps

COMMUNAL

Club Room (Zone A)
Fully fitted gymnasium and sauna (Zone B)
Modern 8 person passenger lifts to all floors





A DEVELOPMENT BY ZONE
ZONEKT20 LIMITED
REDLAKE BUSINESS CENTRE
REDLAKE LANE
WOKINGHAM
RG40 3BF

EMAIL: INFO@ZONEDEVELOPMENTS.COM
WWW.ZONEDEVELOPMENTS.COM

ALL ENQUIRIES : 0118 977 4732

Important notice

These particulars are intended to give a fair and substantially correct overall description for the guidance of intending purchasers and do not constitute part of an offer or contract. Prospective purchasers ought to seek their own professional advice. All descriptions, dimensions, areas, reference to condition and necessary permissions for use and occupation and other details are given in good faith, and are believed to be correct, but any intending purchasers should not rely on them as statements or representations of fact, but must satisfy themselves by inspection or otherwise as to the correctness of each of them. All measurements are approximate. The Gym is in Zone B and the Communal Room is in Zone A. The process of producing new homes can be affected by many factors and it is sometimes necessary to change the layout, materials, services or other items of specification mentioned within this brochure. If there is any point which is of particular importance to you, please contact your agent or ZoneKT20 to check the information, particularly if contemplating travelling some distance to view the property.



The National House Building Council will independently survey the property during the course of construction and upon satisfactory structural completion, issue their NHBC Buildmark warranty.